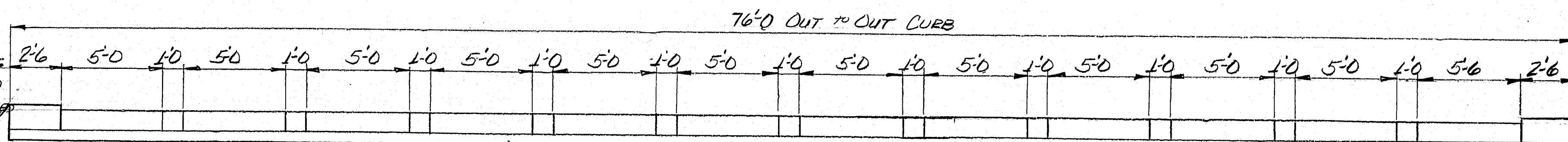


# RAIL BAR NOTES

1. ENDS OF RAIL BARS TO PROTECT 2 1/2" INTO POST AND WRAPPED WITH 2 LAYERS OF ROOF FELT.
2. WIRE STIRRUPS FOR BARS SHALL BE CONSTRUCTED IN THE FIELD FROM A SINGLE STRAND OF #9 ANNEALED WIRE, MAKING A COMPLETE TURN AROUND EACH RE-BAR.
3. AFTER RAIL BARS ARE IN PLACE, ALL EXPOSED ROOFING SHALL BE NEATLY TRIMMED AWAY.



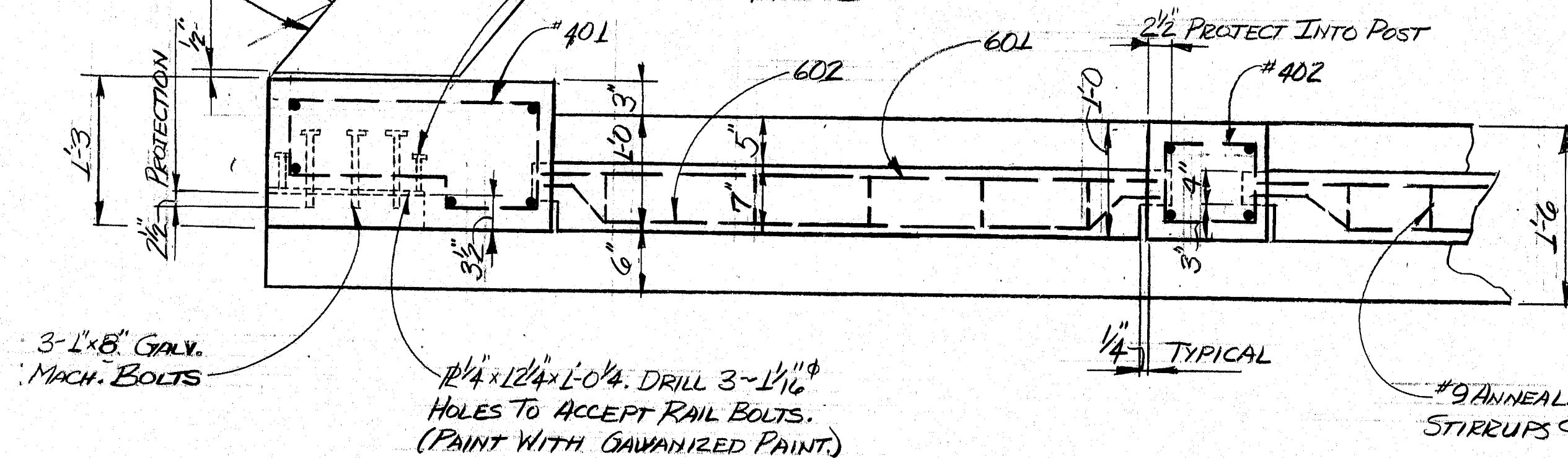
76'-10" OUT TO OUT SLAB

LONGITUDINAL CONSTRUCTION JOINT

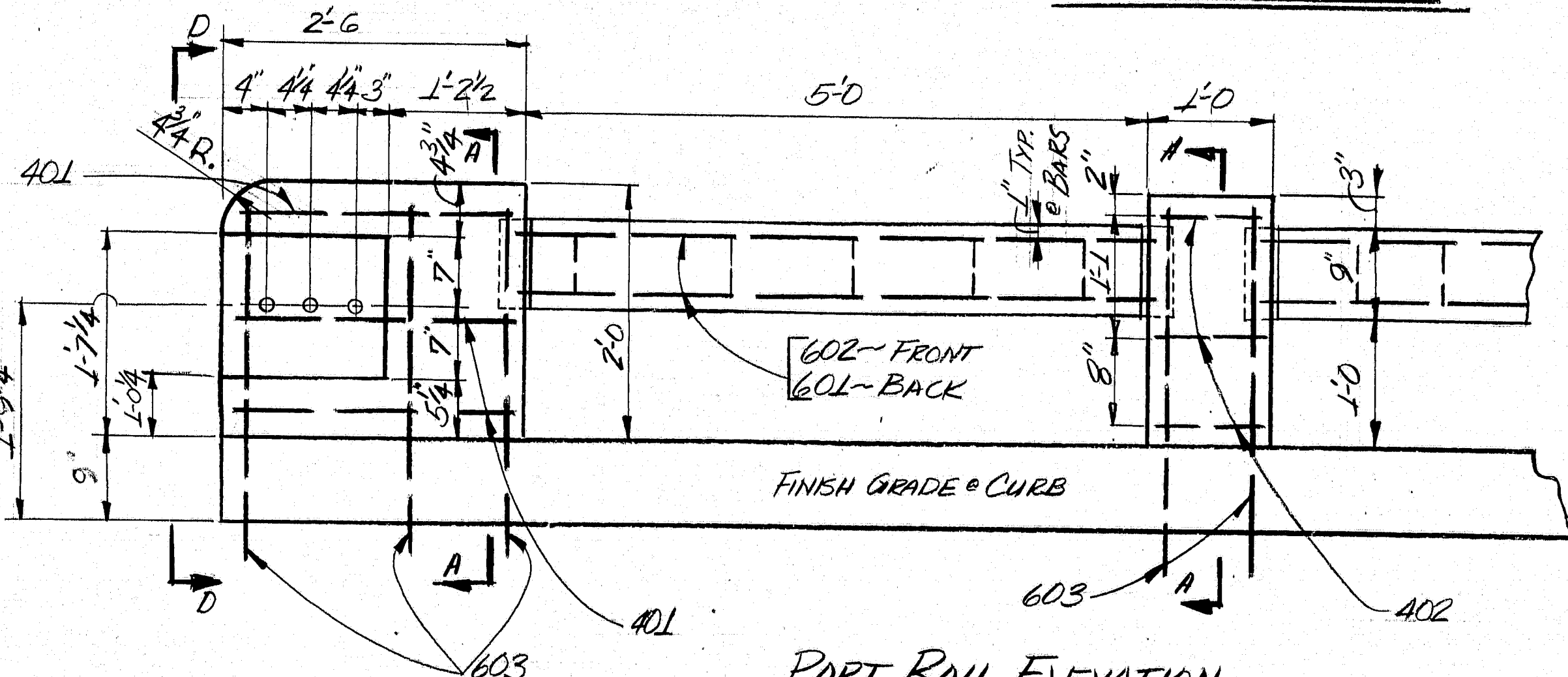
## NOTE:

CHIP PARAPET BACK 3" TO ALLOW FOR PLACEMENT OF NEW CONC. END POST. COVER 1/2" SLOTS BETWEEN WINGWALLS & SUPERSTRUCTURE ON BACKSIDE W/ 2 LAYERS OF HEAVY ROOFING FELT 10" WIDE, COAT EACH LAYER W/ ASPHALT.

4-#8 x 4" MACH. BOLTS WELD TO 1/4" PLATE



## PART RAIL PLAN



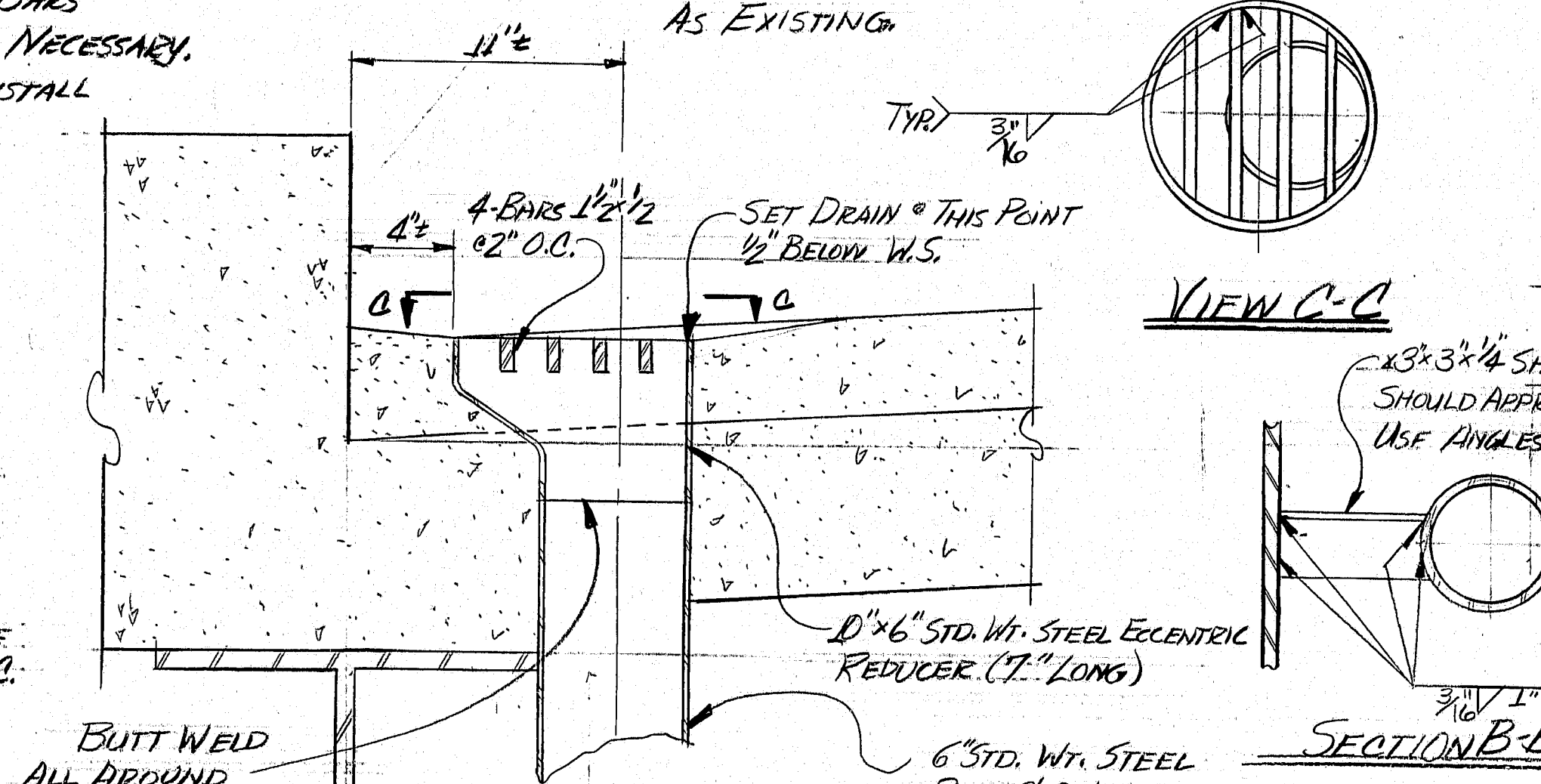
## PART RAIL ELEVATION

## SCOPE OF WORK

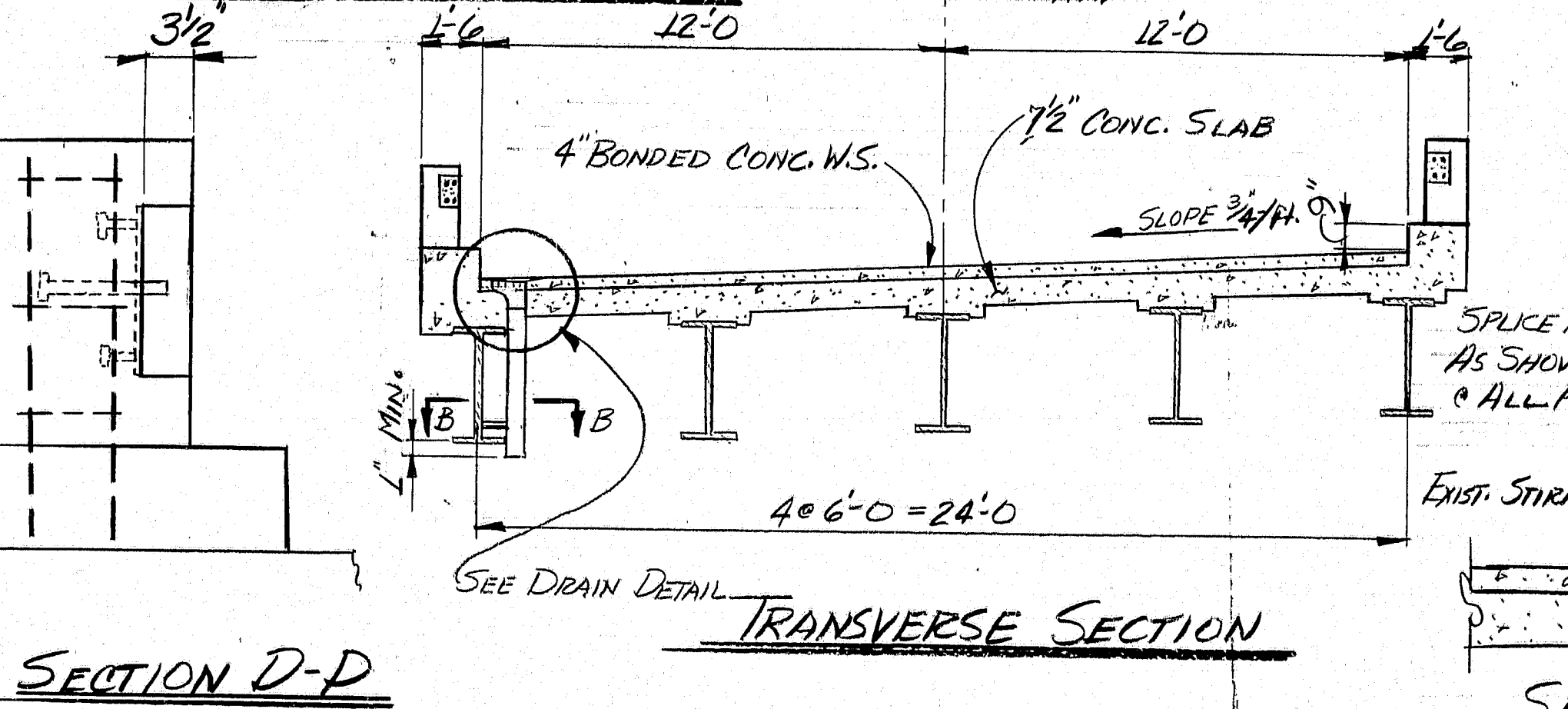
REMOVE EXISTING W.S. REMOVE EXIST. DRAINS. REMOVE EXISTING RAIL BARS & POSTS. REMOVE EXIST. CURBS AS NECESSARY. INSTALL NEW CURB, RAILS & POSTS. INSTALL NEW DRAINS & BONDED CONC. W.S.

## NOTE:

INSTALL NEW DRAINS IN APPROXIMATELY SAME LOCATION AS EXISTING.



## 4" BOND - DRAIN DETAIL



## SECTION D-D

## TRANSVERSE SECTION

## BONDING GROUT NOTE:

The deck surface must be thoroughly sandblasted and cleaned to remove all dust or loose materials immediately before bonding grout is placed.

Deck surface to be surface dry with no standing water in pockets or low areas when bonding grout is applied.

The bonding grout shall consist of equal parts by weight of Portland Cement and concrete sand with the plus #8 material removed and mixed with enough water to give a thick, creamy consistency.

Bonding grout to be evenly broomed onto the concrete surface ensuring that the entire surface, including face of curb to the finish grade of the wearing surface, is coated and that no excess grout collects in low spots or pockets. Grout shall be thoroughly broomed under and around reinforcing bars.

Rate of application must be controlled so that the grout does not dry before the new concrete is placed.

## GENERAL NOTES

1. Remove existing wearing surface.
2. If main steel is exposed, concrete should be removed under the steel to a depth of 1" minimum.
3. Blast clean the slab before any placement of bonding grout or concrete. NOTE: SLAB IS TO BE SURFACE DRY BEFORE PLACEMENT OF BONDING GROUT.
4. Broom on a layer of bonding grout just prior to placing concrete. See note this sheet for bonding grout specifications.
5. Concrete to be cured using burlap and water or other approved methods.
6. Concrete to be Class "Y" and aggregate to be crushed ledge.
7. Minimum cover to be 2" unless otherwise noted.
8. Chamfer all exposed edges 1/4" unless otherwise noted.

## MATERIALS

4-#6 x 10' LONG STD. WT. STEEL ECCENTRIC REDUCER

15' x 1/4" x 6" STD. WT. STEEL PIPE

CONCRETE

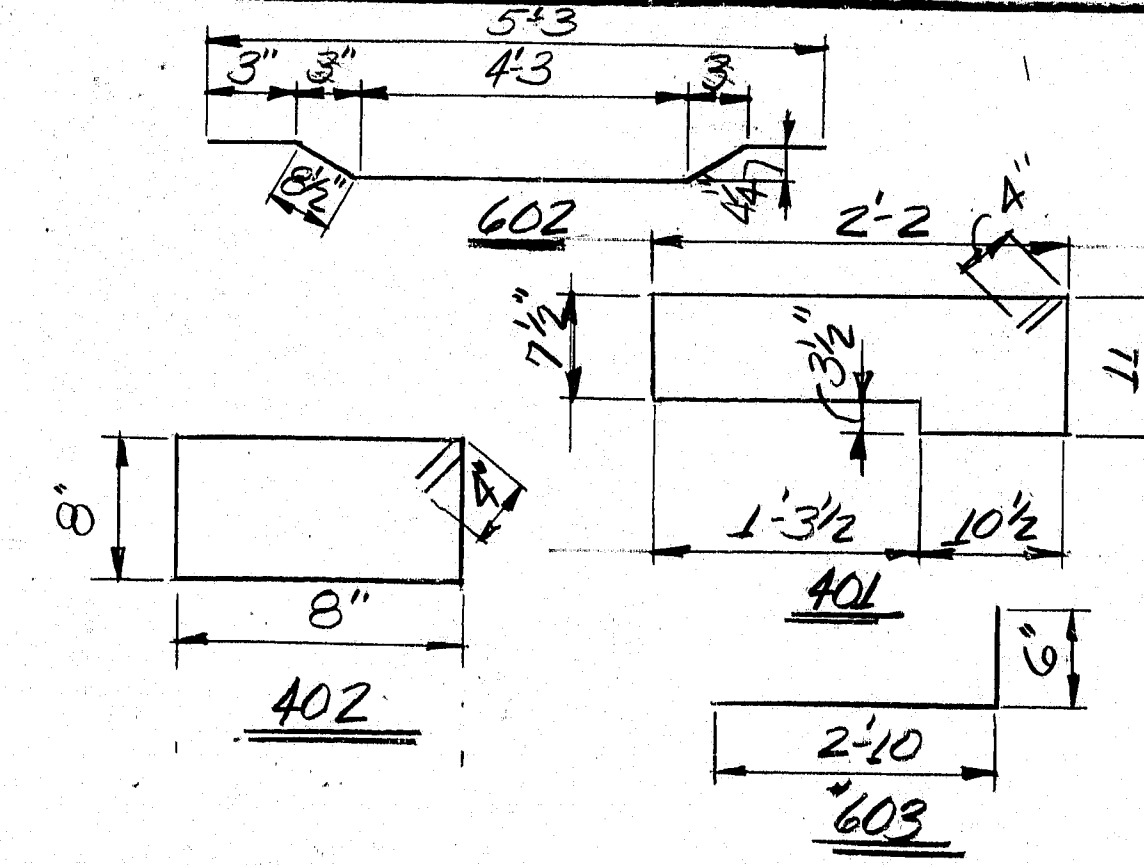
WEARING SURFACE: 467 x 77 x 24 = 28.5

RAILS: 34 x 29 x 4

SAF: 14 x 4

TOTAL: 4364

## REINFORCING SCHEDULE



MARK	SIZE	NO.	LENGTH	LOCATION
*401	#4	12	6'-10"	END POST - STIRRUP
*402	#4	66	3'-4"	INTER. POST - STIRRUP
*601	#6	48	5'-3"	RAIL BAR
*602	#6	48	6'-2"	RAIL BAR
*603	#6	112	3'-4"	ALL POSTS

\* DENOTES BENT BAR  
ALL DIMENSIONS ARE OUT TO OUT OF BAR.  
EST. WT. = 1,586 LBS.

STATE OF MAINE  
DEPARTMENT OF TRANSPORTATION

#3435  
DEAD RIVER BRIDGE  
OVER  
NO. BRANCH DEAD RIVER  
IN THE TOWN OF  
CHAIN OF PONDS  
IN  
FRANKLIN COUNTY  
BONDED W.S., RAILS, CURBS, DRAINS  
SHEET 1 OF 1 AUGUSTA, MAINE MAY 23, 1988

179-188

PROJECT DESIGN ENGINEER	DATE
DESIGN - DETAILED	5/22/88
CHECKED	
REVISIONS	
FIELD CHANGES	
PLANS	

BRIDGE 44-132-4710